



Features

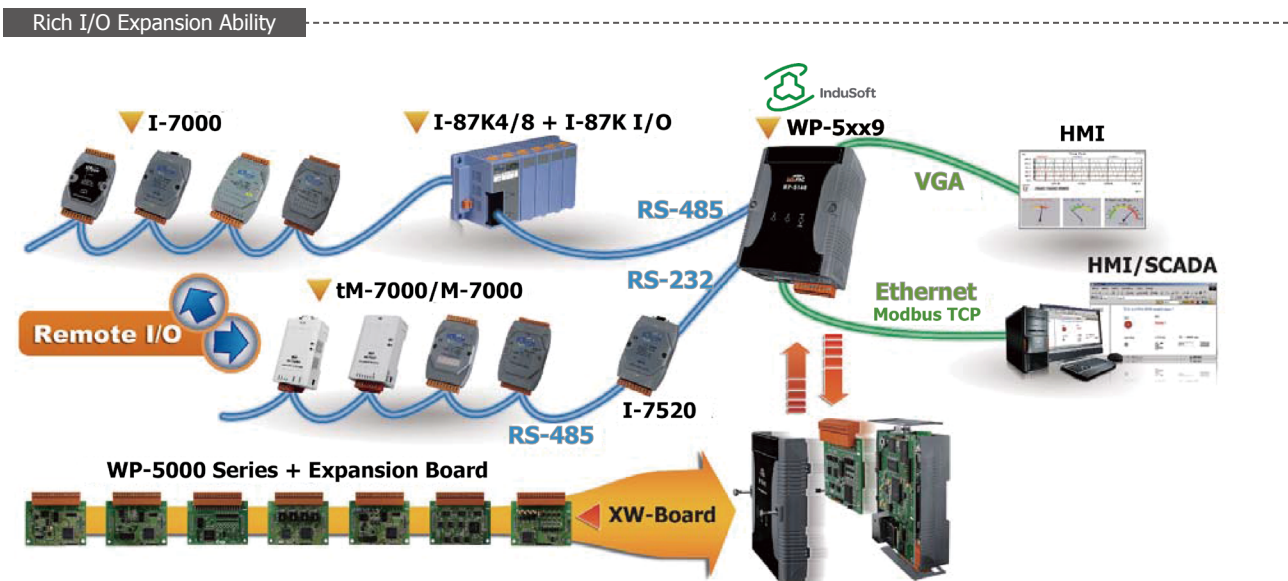
- Pre-installed InduSoft Web Studio Runtime
- PXA270, 520 MHz CPU, or Compatible
- Windows CE .NET 5.0 Core
- Hard Real-Time Capability
- 64-bit Hardware Serial Number for Software Protection
- Microphone-In and Earphone-out
- I/O Expansion Bus
- VGA Port Output
- Dual 10/100M Ethernet Ports
- 3 Serial Ports (RS-232/485)
- Operating Temperature: -25 ~ +75°C

Introduction

The ICP DAS **WinPAC-5149 Series** is the new generation PAC (Programmable Automation Controller) with the powerful InduSoft Web Studio. It features with the powerful InduSoft Web Studio. InduSoft is the most powerful, integrated collection of e-automation development tool that includes all the building blocks needed to develop Human Machine Interface (HMI) and Super-visibility Control and Data Acquisition (SCADA) systems. The WinPAC-5000 series has many advantages, including hard real-time capability, small core size, fast boot speed, interrupt handling at a deeper level, achievable deterministic control and low cost.

For hardware expansion, it also supports an I/O expansion bus. The I/O expansion bus can be used to implement various I/O functions such as D/I, D/O,A/ D, D/A, Timer/Counter, UART, and other I/O functions. Nearly all kinds of I/O functions can be implemented by this bus. But the bus can support only one board. There are more than 10 boards available for WinPAC-5000 series, users can choose one of them to expand hardware features.

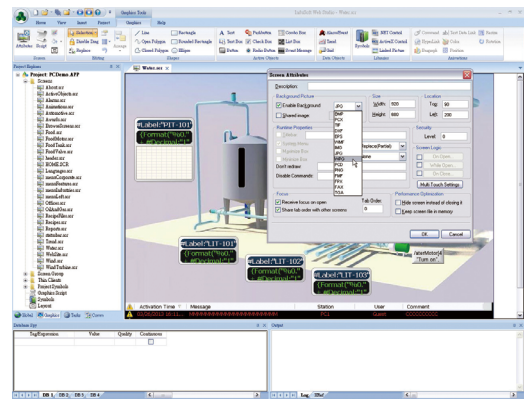
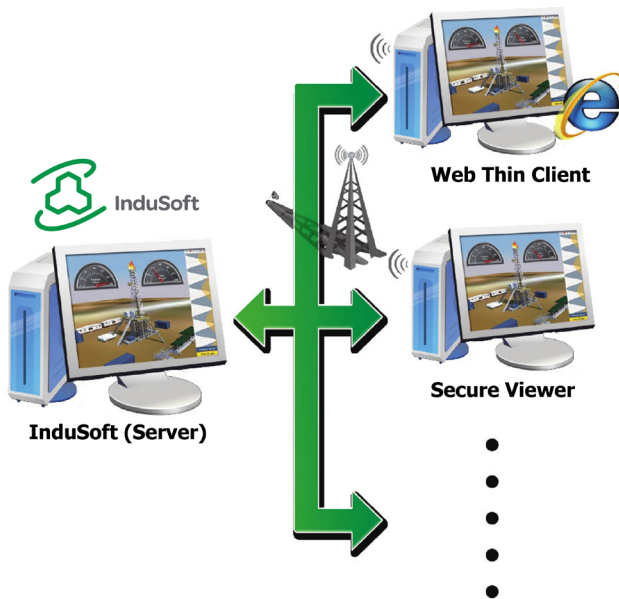
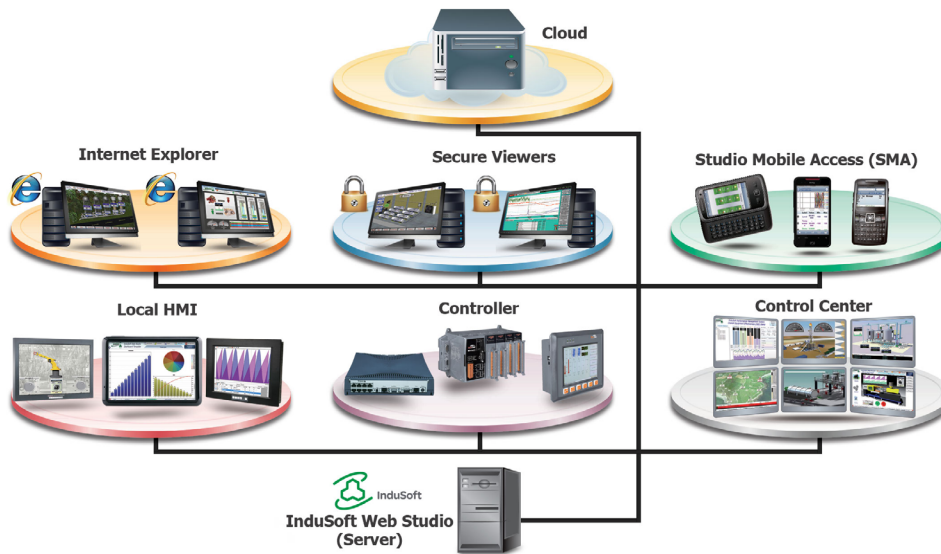
Applications



InduSoft Features

IWS applications run on microcomputers connected in real-time to machines or processors through WinPAC programmable controllers, remote I/O devices, and other data acquisition equipment. These applications consist of animated operator-interface screens, rollable I/O devices, an application tags database, and optional modules such as alarm monitors, trend charts, recipes, schedulers, and a security system.

- Intuitive script language with more than 100 standard functions is provided.
- Conform to industry standards such as Microsoft.NET, OPC, DDE, ODBC, XML.
- Full-Featured WinCE-based run-time environment (CE View).
- Dynamic library of symbols - customizable.
- ActiveX container (Windows NT/CE).
- Automatic e-mail (SMTP) and dial-up connection interface supported.
- Provide multi-level security for applications, including the Internet and Intranet.

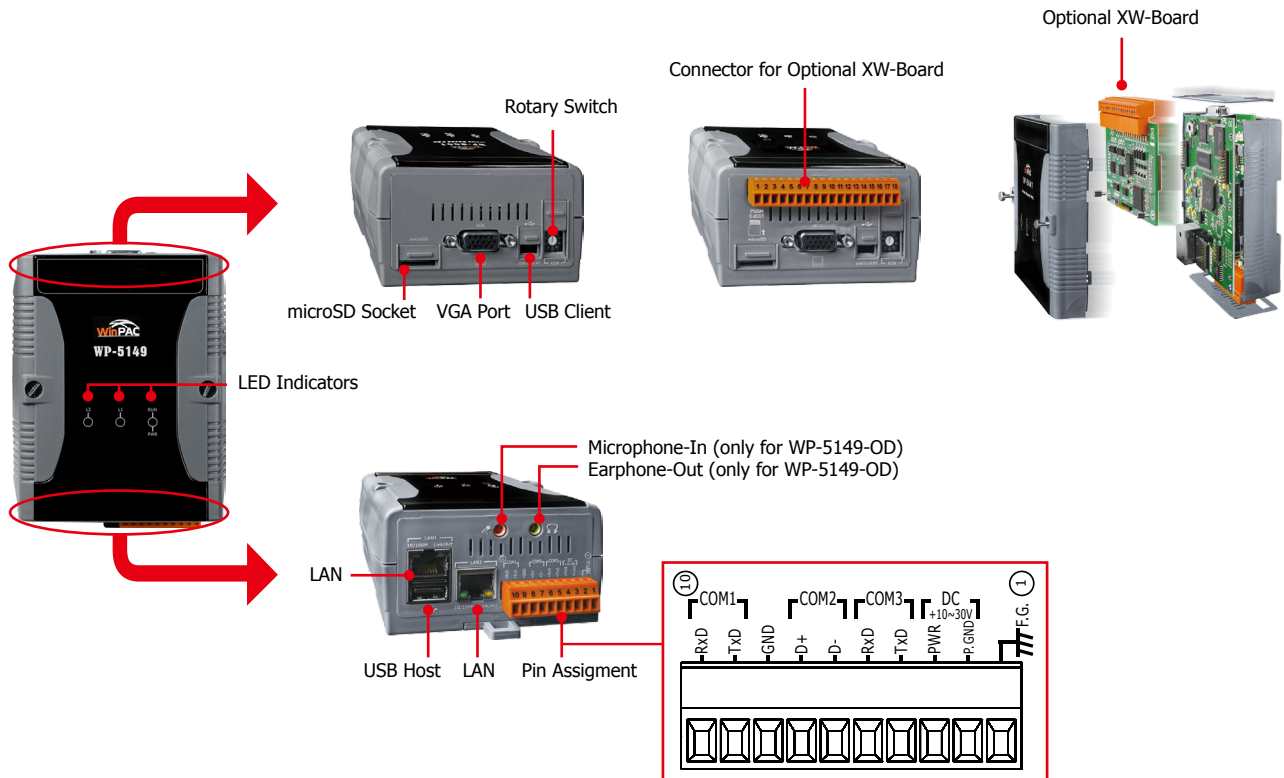


InduSoft WP-5000

Specifications

Models	WP-5149	WP-5149-OD
System Software		
OS	Windows CE 5.0	
.Net Compact Framework	3.5	
Embedded Service	FTP server, Web server (supports VB script, JAVA script), Embedded SQL server	
SDK Provided	Dll for eVC, Dll for Visual Studio.Net 2003/2005/2008	
Development Software		
InduSoft Software	InduSoft Web Studio Runtime	
CPU Module		
CPU	PXA270 or compatible (32-bit and 520 MHz)	
SDRAM	128 MB	
Flash	64 MB (32 MB for OS, 32 MB for System_Disk and System Registry)	
EEPROM	16 KB Data Retention: 40 years; 1,000,000 erase/write cycles	
Expansion Flash Memory	microSD socket with one 2 GB microSD card (support up to 16 GB microSDHC card)	
Battery Backup SRAM	Require one XW608, 512 KB (for retain variables)	
RTC (Real Time Clock)	Provide second, minute, hour, date, day of week, month, year	
64-bit Hardware Serial Number	Yes	
Dual Watchdog Timers	Yes	
LED Indicators	1 LED for Power and Running, 2 LEDs for user programmable	
Rotary Switch	Yes (0 ~ 9)	
VGA & Communication Ports		
VGA	Yes (640 × 480 / 800 × 600)	
Ethernet	RJ-45 × 2, 10/100 Base-TX (Auto-negotiating, Auto MDI/MDI-X, LED indicators)	
USB 1.1 (client)	1	
USB 1.1 (host)	1	
Audio	-	Microphone-In and Earphone-Out
COM 1	RS-232 (Rx, Tx and GND); Non-isolated	
COM 2	RS-485 (Data+, Data-); 2500 VDC isolated	
COM 3	RS-232 (Rx, Tx and GND); Non-isolated	
I/O Expansion		
I/O Expansion Bus	Yes, to mount one optional XW-Board.	
Mechanical		
Dimensions (W x L x H)	91 mm x 132 mm x 52 mm	
Installation	DIN-Rail Mounting	
Environmental		
Operating Temperature	-25 ~ +75°C	
Storage Temperature	-30 ~ +80°C	
Ambient Relative Humidity	10% ~ 90% RH, non-condensing	
Power		
Input Range	+10 ~ +30 VDC	
Isolation	1 kV	
Consumption	4.8 W (0.2 A @ 24 VDC)	6 W (0.25 A @ 24 VDC)

Appearance



Ordering Information

InduSoft Default Runtime License: 300 Tags, 3 Drivers	
WP-5149-EN CR	InduSoft based WinPAC-5000 with WinCE 5.0 (English Version of OS) (RoHS)
WP-5149-OD-EN CR	InduSoft based WinPAC-5000 with WinCE 5.0 and Audio (English Version of OS) (RoHS)
WP-5149-TC CR	InduSoft based WinPAC-5000 with WinCE 5.0 (Traditional Chinese Version of OS) (RoHS)
WP-5149-OD-TC CR	InduSoft based WinPAC-5000 with WinCE 5.0 and Audio (Traditional Chinese Version of OS) (RoHS)
WP-5149-SC CR	InduSoft based WinPAC-5000 with WinCE 5.0 (Simplified Chinese Version of OS) (RoHS)
WP-5149-OD-SC CR	InduSoft based WinPAC-5000 with WinCE 5.0 and Audio (Simplified Chinese Version of OS) (RoHS)
InduSoft Default Runtime License: 1500 Tags, 3 Drivers	
WP-5149-EN-1500 CR	InduSoft based WinPAC-5000 with WinCE 5.0 (English Version of OS) (RoHS)
WP-5149-OD-EN-1500 CR	InduSoft based WinPAC-5000 with WinCE 5.0 and Audio (English Version of OS) (RoHS)
WP-5149-TC-1500 CR	InduSoft based WinPAC-5000 with WinCE 5.0 (Traditional Chinese Version of OS) (RoHS)
WP-5149-OD-TC-1500 CR	InduSoft based WinPAC-5000 with WinCE 5.0 and Audio (Traditional Chinese Version of OS) (RoHS)
WP-5149-SC-1500 CR	InduSoft based WinPAC-5000 with WinCE 5.0 (Simplified Chinese Version of OS) (RoHS)
WP-5149-OD-SC-1500 CR	InduSoft based WinPAC-5000 with WinCE 5.0 and Audio (Simplified Chinese Version of OS) (RoHS)

Accessories

Accessories	
XW-Board	Add-on I/O Expansion Board
DP-665	24 VDC/2.5 A, 60 W and 5 VDC/0.5 A, 2.5 W Power Supply with DIN-Rail Mounting
DP-1200	24 VDC/5.0 A, 120 W Power Supply with DIN-Rail Mounting
MDR-20-24	24 VDC/1.0 A, 24 W Power Supply with DIN-Rail Mounting
MDR-60-24	24 VDC/2.5 A, 60 W Power Supply with DIN-Rail Mounting